

Download CipherConnect to BlackBerry Phones

Prior to Use of CipherConnect

CipherConnect is a COM-to-key utility designed for CipherLab cordless scanners (156x and 166x) to work as an input device for the BlackBerry phone, enabling intensive data collection via Bluetooth Serial Port connection.

CipherConnect is ready downloadable via the BlackBerry App World. Go on-line and browse the market for the applications:

 **CipherConnect Pro** A free version with limited support

 **CipherConnect Demo** A demo data processing utility

Follow the instructions below for the Download and Update on the mobile phone.

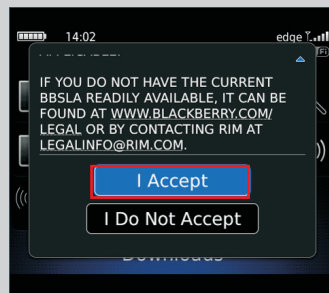
Note Download/install the availability utility directly from CipherConnect|Help site of <http://connect.cipherlab.com>.
Note An external storage is required (e.g. SD card) for CipherConnect Demo.

Download and Update

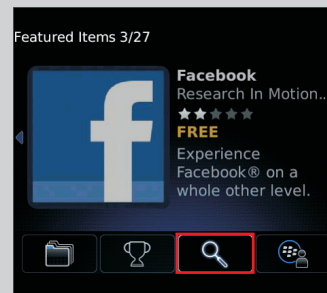
On the Home screen, press the [Menu] key.

Go to **BlackBerry App World**.

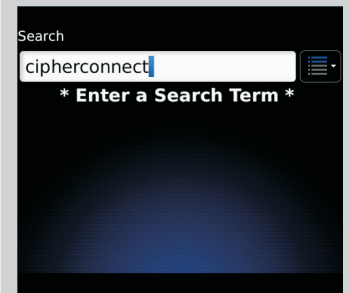
Click [I Accept] to continue.



Click the button  to search for the application.



Type "cipherconnect" in the text field, and then click the trackpad to confirm.



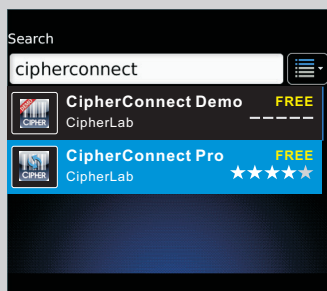
1

2

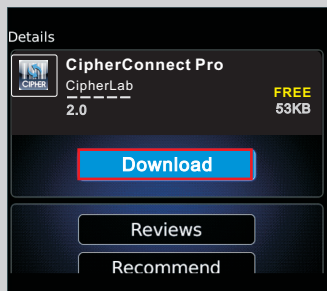
3

4

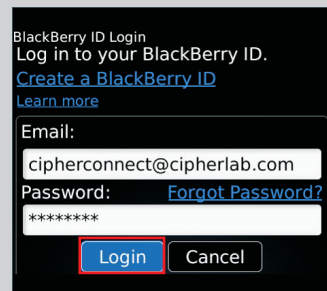
The search result (e.g. **CipherConnect Pro**) is displayed. Click it to view the details.



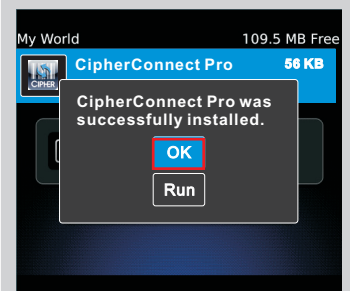
Details of the application is shown. Click [Download].



Input your BlackBerry ID info, and then click [Login] to download the application.



Once the download process is completed, the message "(The application) was successfully installed." is displayed. Click [OK] to return.



5

6

7

8



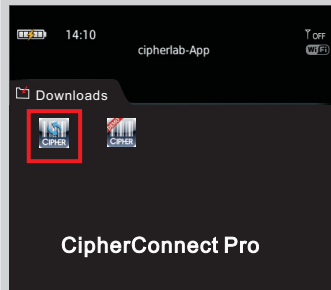
The On-line **CipherConnect Pro** is free version with limited supports.

Follow the on-screen instruction to complete the update.

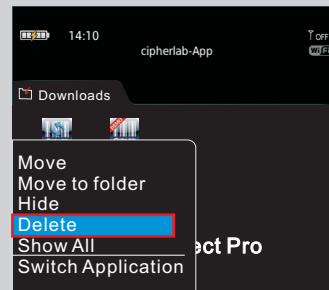


To uninstall **CipherConnect**, press the [menu] key on the Home screen, and then go to **Downloads**.

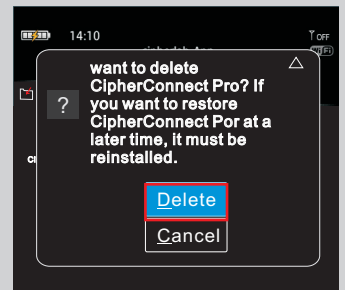
Select **CipherConnect Pro** from the application list.



Press the [Menu] key, and then click [Delete].



Click [Delete] to confirm.



Preparation for Scanner

CipherConnect is ready for use after successful downloads via the BlackBerry App World. Working with CipherLab cordless scanners (156x and 166x), it can deliver optimal performance.

- 1 Turn on the scanner, and wait until the LED indicator becomes flashing blue.
- 2 Set the output interface as "BT SPP Slave".
- 3 Specify the PIN code for authentication.
- 4 The scanner is active at power-on for two minutes by default, waiting for a connection request from the mobile phone. Follow the instructions below for Connection and Configuration on the mobile phone.

- Note** The mobile platform must be BlackBerry 5 and BlackBerry 6; 1660 firmware must be version 1.33 or later; 1661 firmware must be version 1.04 or later; 1560/1562 firmware must be version 1.26 or later; 1564 firmware must be version 1.03 or later.
- Note** You may use a preset PIN code with the scanner. Yet, dynamic input of PIN is also supported. Refer to a separate scanner user guide for complete settings.

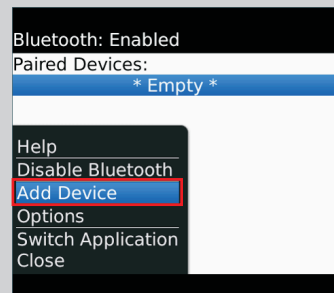
Configure CipherConnect for BlackBerry Phones

Connection and Configuration

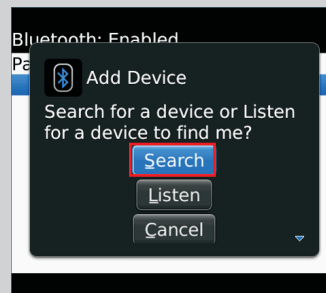
On the Home screen, press the [Menu] key.

Go to **Options** and select **Bluetooth**.

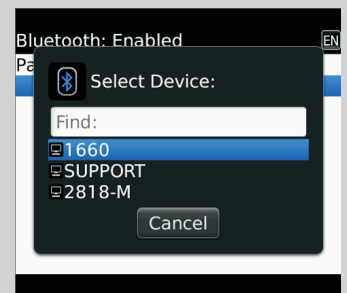
Press the [Menu] key, and then click [Add Device].



Click [Search] to find nearby Bluetooth devices.



Select CipherLab scanner (e.g. 1660).



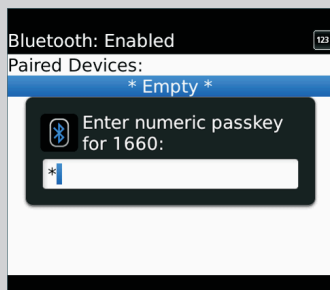
1

2

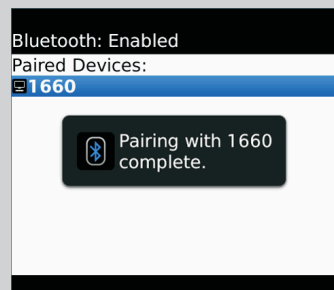
3

4

Input the preset PIN code of the scanner, and then click the trackpad to confirm.



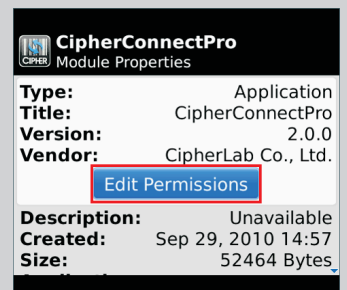
Once paired successfully, the message "Pairing with 1660 complete" is displayed on the screen.



Press the [Menu] key on the Home screen. Go to **Options** and select **Applications**. Then select **CipherConnect Pro**.



Click [Edit Permissions] to configure the program permissions.



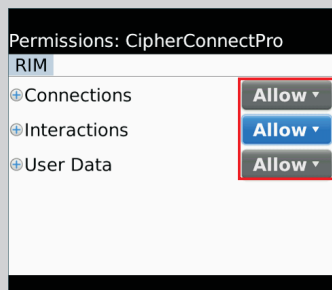
5

6

7

8

On **Permissions** screen, make sure all the three parameters are set to "Allow".



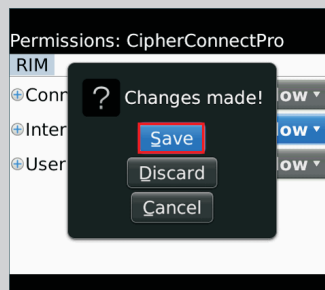
9



If the parameter is not set to "Allow", the mobile phone will deny the program access for the following:

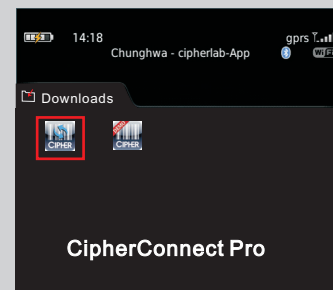
- ▶ Connections: Permission to connect to the scanner.
- ▶ Interactions: Permission to send barcode data to an application.
- ▶ User Data: Permission to save barcode data to a file.

Press the [Escape] key, and then click [Save] to confirm the changes made.



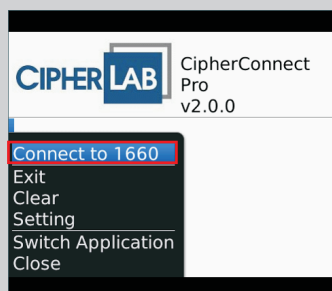
10

On the Home screen, press the [Menu] key, press the [Menu] key. Go to **Downloads** and select **CipherConnect Pro** to open the program.



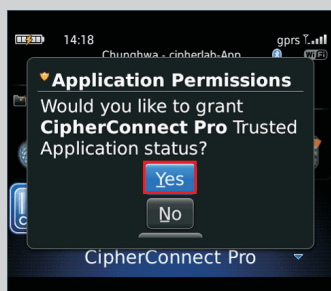
11

Press the [Menu] key, and then click [Connect to (the scanner)] in the program menu.



12

If you set the parameter to "Custom" in *Step 9*, a dialog box will be displayed. Click [Yes] to grant the permission.



13

Once connected successfully, the message "Bluetooth is connected" is displayed on the screen.



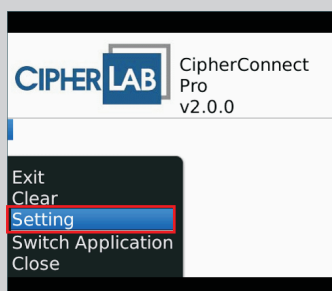
14



Available options in the menu:

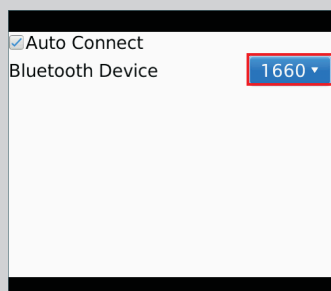
- ▶ Select [Exit] to leave the program.
- ▶ Select [Clear] to clear all scanned data displayed on the screen.
- ▶ Select [Setting] to set up the parameters.
- ▶ Select [Switch Application] to switch to another application.
- ▶ Select [Close] to hide the program.

Press the [Menu] key, and then click [Setting].



15

Make sure the selected scanner is correct, and then press the [Escape] key to return.



16



We suggest that you enable [Auto Connect]. After initial connection, it can automatically connect to the scanner upon execution, or resume connection once connection error is resolved.

With Transmit Buffer enabled on the scanner, you can continue scanning data even when getting out of range.



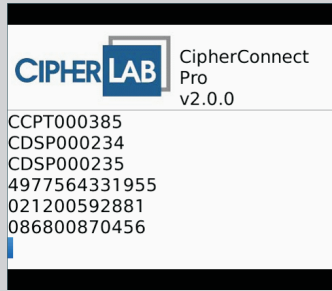
Connection Errors:

- Error** The scanner is getting out of range.
- Action** Get back to range ASAP.

- Error** The scanner becomes inactive after standing by for two minutes at power-on.
- Action** Press the blue key to wake up the scanner.

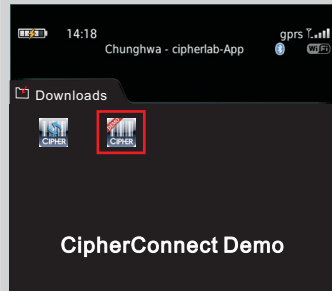
- Error** The scanner automatically shuts down after ten-minute idle.
- Action** Press the [Power] key to turn it on.

Trigger the scanner to read barcodes and data collected will be displayed on the screen.



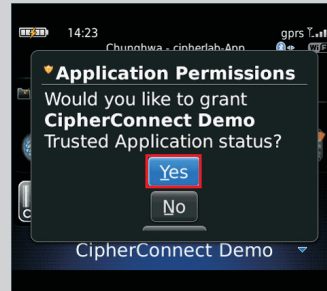
17

On the Home screen, press the [Menu] key. Go to **Downloads** and select **CipherConnect Demo** to open the program.



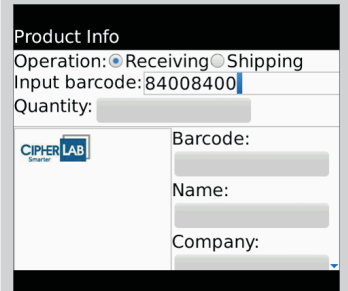
18

Click [Yes] to grant the permission.



19

Trigger the scanner to read a testing barcode.

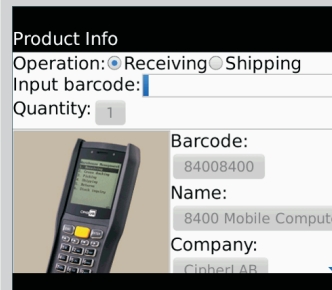


20

Testing Barcodes for Use with Demo Database



Take Receiving Operation for example. The barcode input will bring up product details from the demo database.



21



CipherConnect will simultaneously receive the collected barcode data in an application.

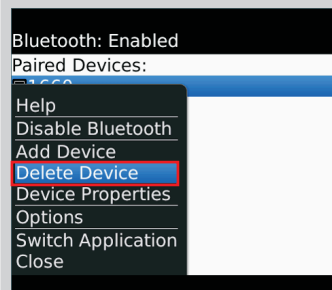
If your mobile phone denies **CipherConnect** sending scanned barcode data to an application, you can still view the scanning result on the program screen.



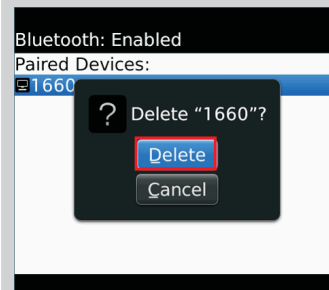
To unpair a device, press the [Menu] key on the Home screen.

Go to **Options** and select **Bluetooth**. See the following two steps.

Step 1: Click the paired device, and then select [Delete Device].



Step 2: Click [Delete].



Copyright © 2011
CipherLab Co., Ltd.